

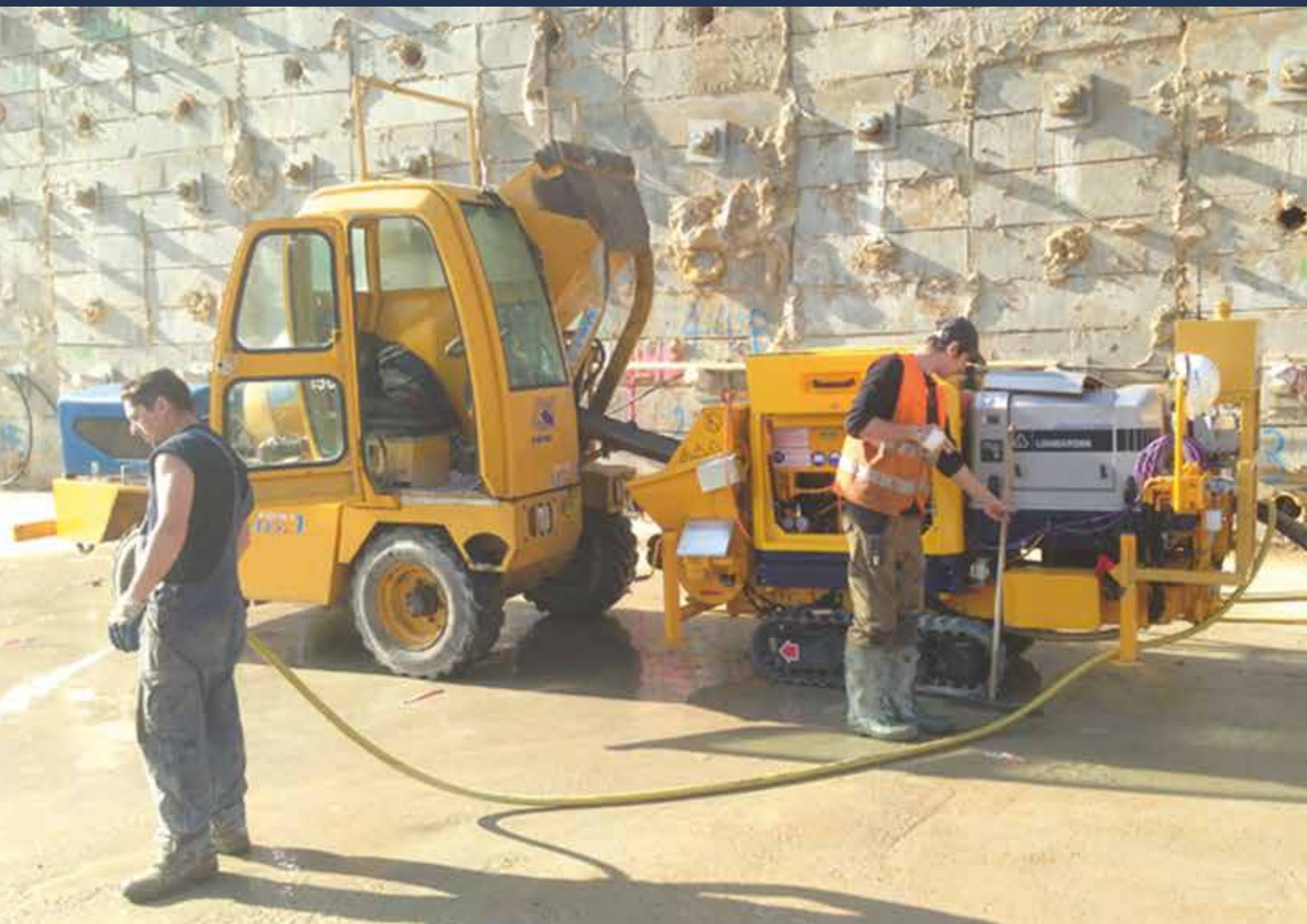


**415.2**  
PRIMA

**SELF LOADING CONCRETE MIXERS**



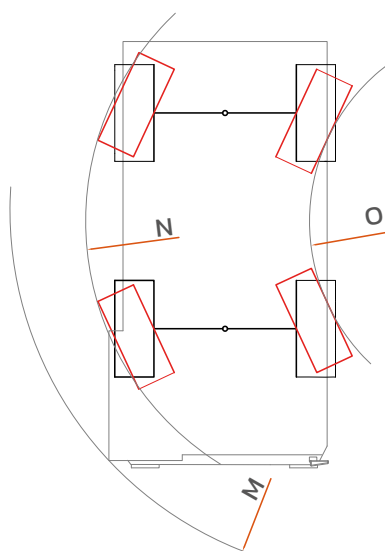
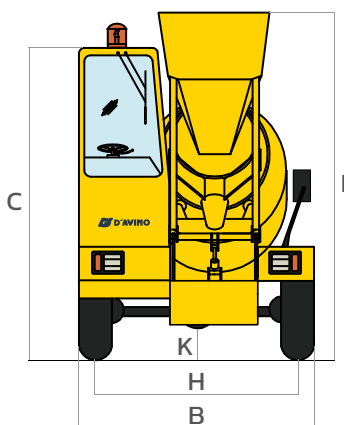
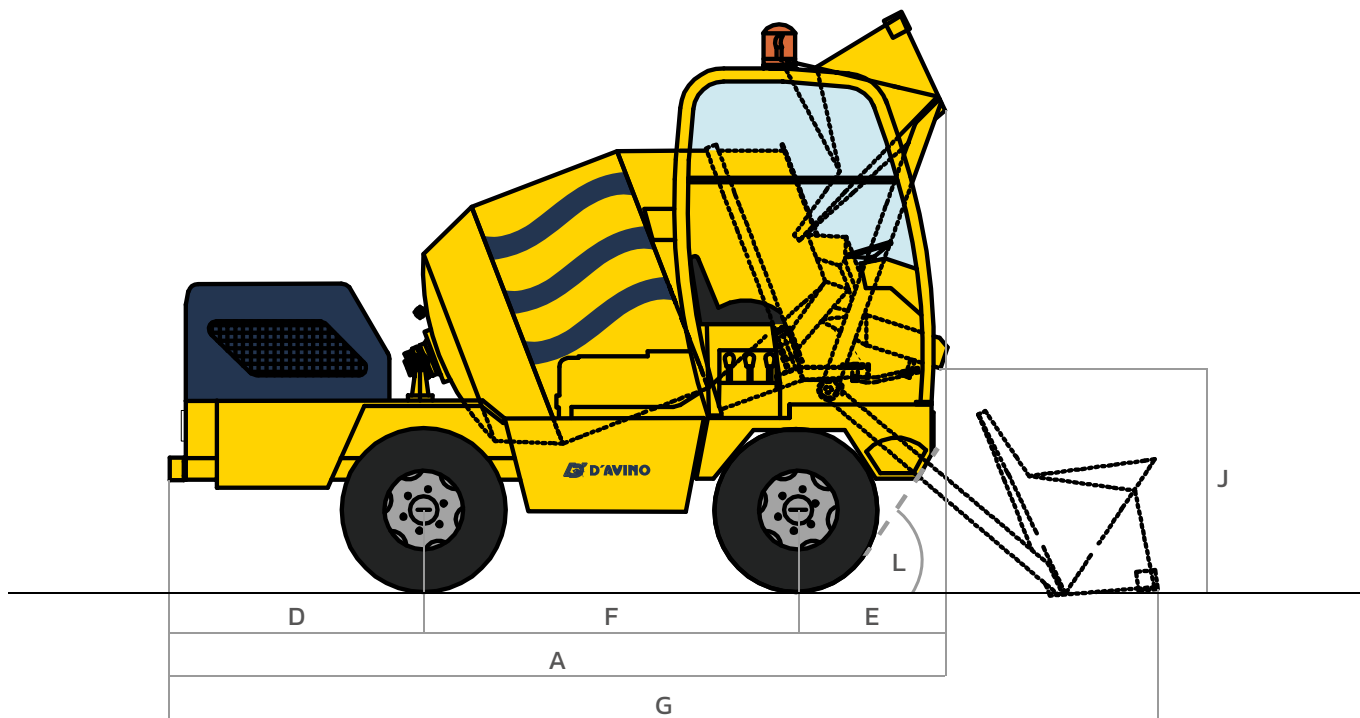
**BEST IN CLASS**



## Technical data

| <b>GENERAL DATA</b>      |                | <b>415</b>                         |
|--------------------------|----------------|------------------------------------|
| Output Class S1          | m <sup>3</sup> | 1,1                                |
| Drivers'seat             |                | Fixed                              |
| Frame                    |                | Fixed                              |
| Drum volume              | l              | 1.400                              |
| Bucket capacity          | l              | 230                                |
| Loading system           |                | Front                              |
| Unloading system         |                | Front                              |
| Empty weight             | kg             | 2.600                              |
| Transmission             |                | Hydrostatic                        |
| Cabin                    |                | 3 sides enclosed                   |
| <b>*ENGINE</b>           |                |                                    |
| Brand                    |                | Yanmar                             |
| Model                    |                |                                    |
| Power                    | kW             | 36                                 |
| <b>DRIVING</b>           |                |                                    |
| Max speed                | km/h           | 20                                 |
| Gradeability             | %              | 40                                 |
| Turning radius           | mm             | 3200                               |
| Traction                 |                | AWS                                |
| Tyres                    |                | 12-16,5 10 PR                      |
| Axle oscillation lock    |                | N/A                                |
| <b>HYDRAULIC SYSTEM</b>  |                |                                    |
| Hydraulic system         |                | Duble gear pump                    |
| Working pressure         | bar            | 130                                |
| <b>ELECTRICAL SYSTEM</b> |                |                                    |
| Starter motor            | V/kW           | 12/3                               |
| Battery                  | V/Ah           | 12/50                              |
| <b>TANK CAPACITY</b>     |                |                                    |
| Fuel                     | l              | 55                                 |
| Hydraulic                | l              | 50                                 |
| <b>BRAKES</b>            |                |                                    |
| Service                  |                | Hydraulic acting on both axles     |
| Parking                  |                | Hydraulic acting on the rear axles |
| <b>APPROVALS</b>         |                |                                    |
| Road approval (Italian)  |                | Yes                                |

\*Stage IIIA engine available



| <b>415</b> |      |
|------------|------|
| <b>A</b>   | 3600 |
| <b>B</b>   | 1780 |
| <b>C</b>   | 2460 |
| <b>D</b>   | 1230 |
| <b>E</b>   | 730  |
| <b>F</b>   | 1640 |
| <b>G</b>   | 4500 |
| <b>H</b>   | 1500 |
| <b>I</b>   | 2690 |
| <b>J</b>   | 960  |
| <b>K</b>   | 260  |
| <b>L</b>   | 55°  |
| <b>M</b>   | 3200 |
| <b>N</b>   | 2600 |
| <b>O</b>   | 1050 |

